



ĐALOVIĆA CAVE , BISTRICA, BIJELO POLJE - MONTENEGRO

THE LARGEST BALKAN CAVE



**STRATEGIC PLAN OF THE MUNICIPALITY OF BIJELO POLJE 2016-2022
FOR ĐALOVIĆA CAVE AS THE MOST SIGNIFICANT TOURIST POTENTIAL**

**ĐALOVIĆA CAVE, IN WHICH THE ENTRANCES TO THE CAVE ARE LOCATED, IS A
PROTECTED AREA IN THE CATEGORY "MONUMENT OF NATURE"**

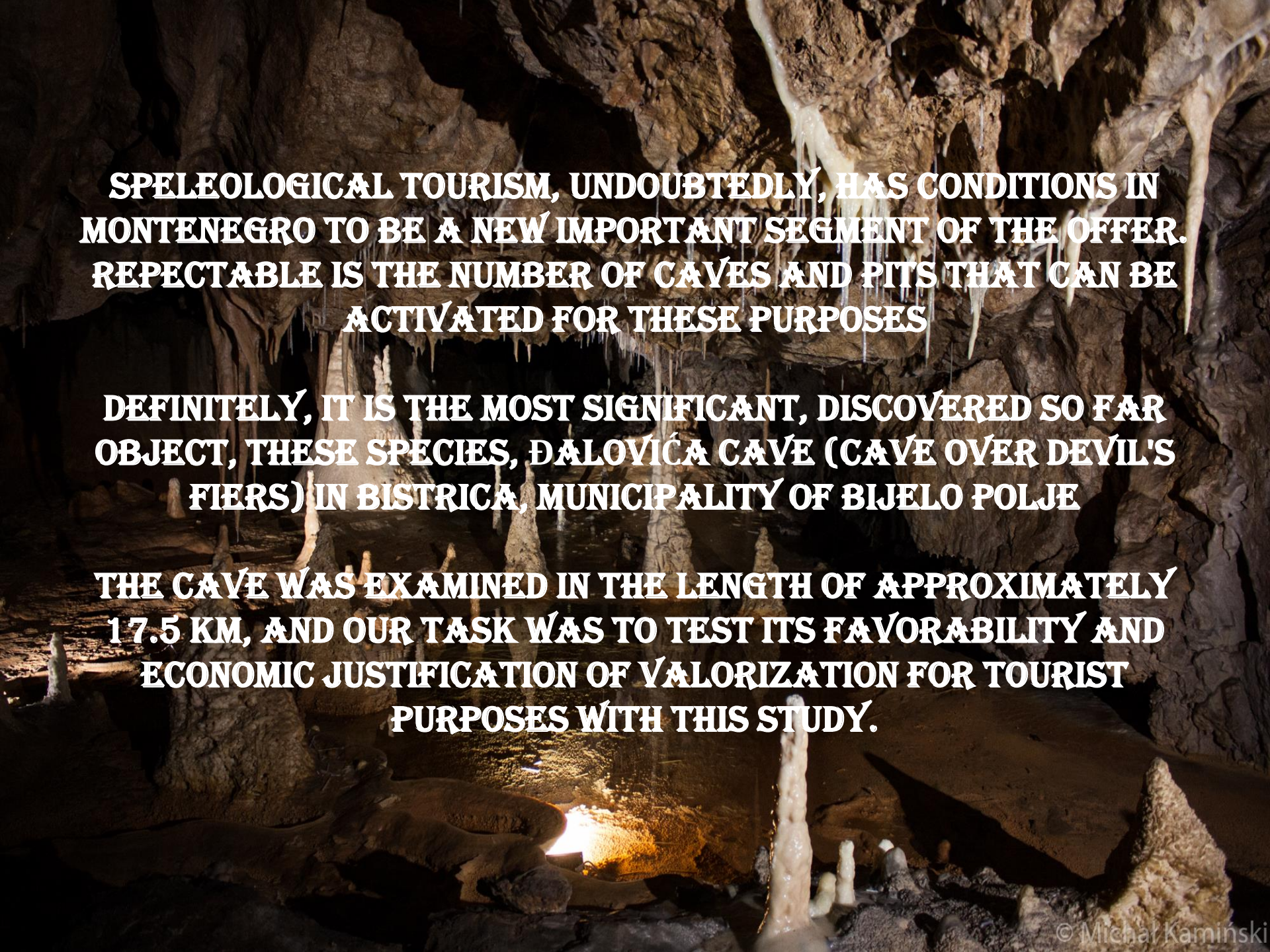
**AREA OF THE PROTECTED AREA IS CCA 1600 HA. IUCN CATEGORY OF MANAGEMENT
OF THIS PROTECTED AREA IS III / V**

**ĐALOVIĆA CAVE ITSELF IS NOT SPECIALLY PROTECTED AS A MONUMENT OF NATURE,
BUT AS A SPELEOLOGICAL OBJECT, IN PARTICULAR, IT IS SUBJECT TO THE
PROVISIONS OF THE LAW ON NATURE PROTECTION**

**ARRANGEMENT OF THE CAVE FOR TOURIST PURPOSES MUST BE BASED ON THE
CONDITIONS OF THE AGENCY FOR ENVIRONMENTAL PROTECTION AND OTHER
COMPETENT INSTITUTIONS**

**THE PUBLIC ANONYMOUS COMPETITION FOR A COMPREHENSIVE CONCEPTUAL URBAN
ARCHITECTURAL SOLUTION HAS COMPLETED**

**THIS STUDY WAS DONE ACCORDING TO INTERNATIONAL GUIDELINES FOR CAVE
DEVELOPMENT AND MANAGEMENT**

A photograph of a cave interior, showing a variety of rock formations. In the foreground, there are several stalagmites of different heights and shapes. The walls and ceiling are covered with numerous stalactites, some of which are quite long and thin. The lighting is dim, with a bright spot on the floor in the lower center, creating a dramatic effect. The overall atmosphere is dark and mysterious.

SPELEOLOGICAL TOURISM, UNDOUBTEDLY, HAS CONDITIONS IN MONTENEGRO TO BE A NEW IMPORTANT SEGMENT OF THE OFFER. REPECTABLE IS THE NUMBER OF CAVES AND PITS THAT CAN BE ACTIVATED FOR THESE PURPOSES

DEFINITELY, IT IS THE MOST SIGNIFICANT, DISCOVERED SO FAR OBJECT, THESE SPECIES, ĐALOVIĆA CAVE (CAVE OVER DEVIL'S FIERS) IN BISTRICA, MUNICIPALITY OF BIJELO POLJE

THE CAVE WAS EXAMINED IN THE LENGTH OF APPROXIMATELY 17.5 KM, AND OUR TASK WAS TO TEST ITS FAVORABILITY AND ECONOMIC JUSTIFICATION OF VALORIZATION FOR TOURIST PURPOSES WITH THIS STUDY.

ROAD BIJELO POLJE - BISTRICA, ĐALOVIĆA CANYON



ROAD BIJELO POLJE - DJALOVIĆA CAVE

BISTRICA - DJALOVIĆA CANYON

JURIŠKA FOUNTAINHEAD

BRIDGE ON BISTRICA RIVER



CANYON BISTRICA



DEVILISH FIRS



HEAD OF BISTRICA RIVER



BISTRICA VILLAGE



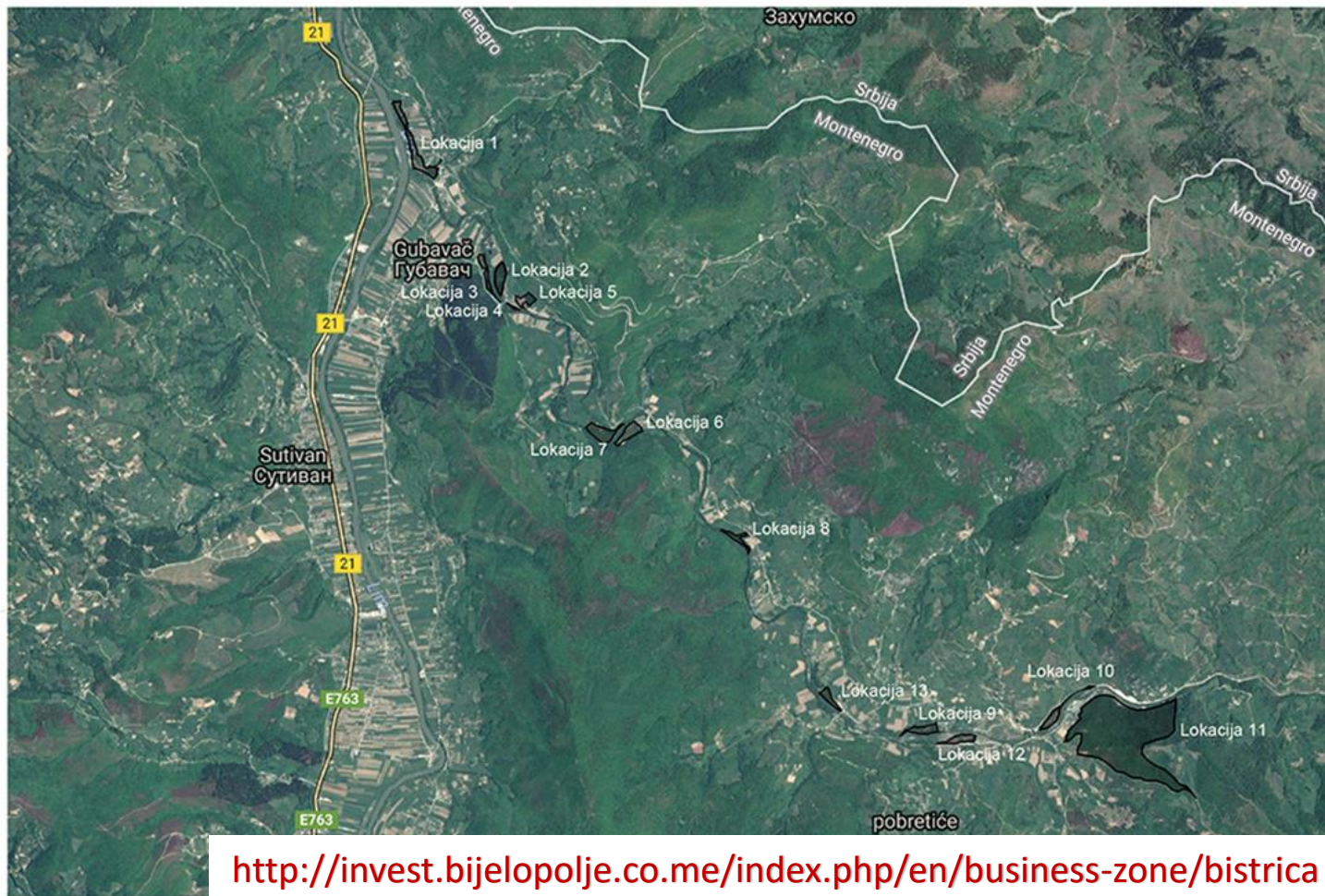
MONASTERY PODVRH



CABLE CAR
MONASTERY PODVRH - DJALOVIĆA CAVE

BUSINESS ZONE „BISTRICA VALLEY“

- 📍 Lokacija 1
- 📍 Lokacija 2
- 📍 Lokacija 3
- 📍 Lokacija 4
- 📍 Lokacija 5
- 📍 Lokacija 6
- 📍 Lokacija 7
- 📍 Lokacija 8
- 📍 Lokacija 9
- 📍 Lokacija 10
- 📍 Lokacija 11
- 📍 Lokacija 12
- 📍 Lokacija 13



<http://invest.bijelopolje.co.me/index.php/en/business-zone/bistrica>

ROAD BISTRICA - MONASTERY PODVRH

VISITOR CENTER

PARKING FOR CARS

PARKING FOR BUSES



PLANNED FACILITIES IN BISTRICA VILLAGE

MONASTERY PODVRH

TOURIST - CATERING CONTENT

PLANNED FACILITIES NEAR MONASTERY



PARKING

DEPARTURE STATION OF THE CABLE CAR

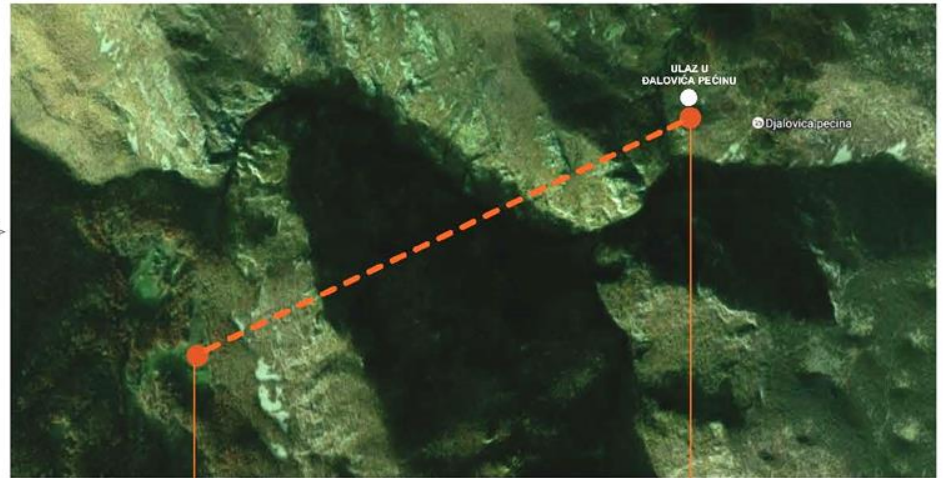
BISTRICA

MONASTERY PODVRH



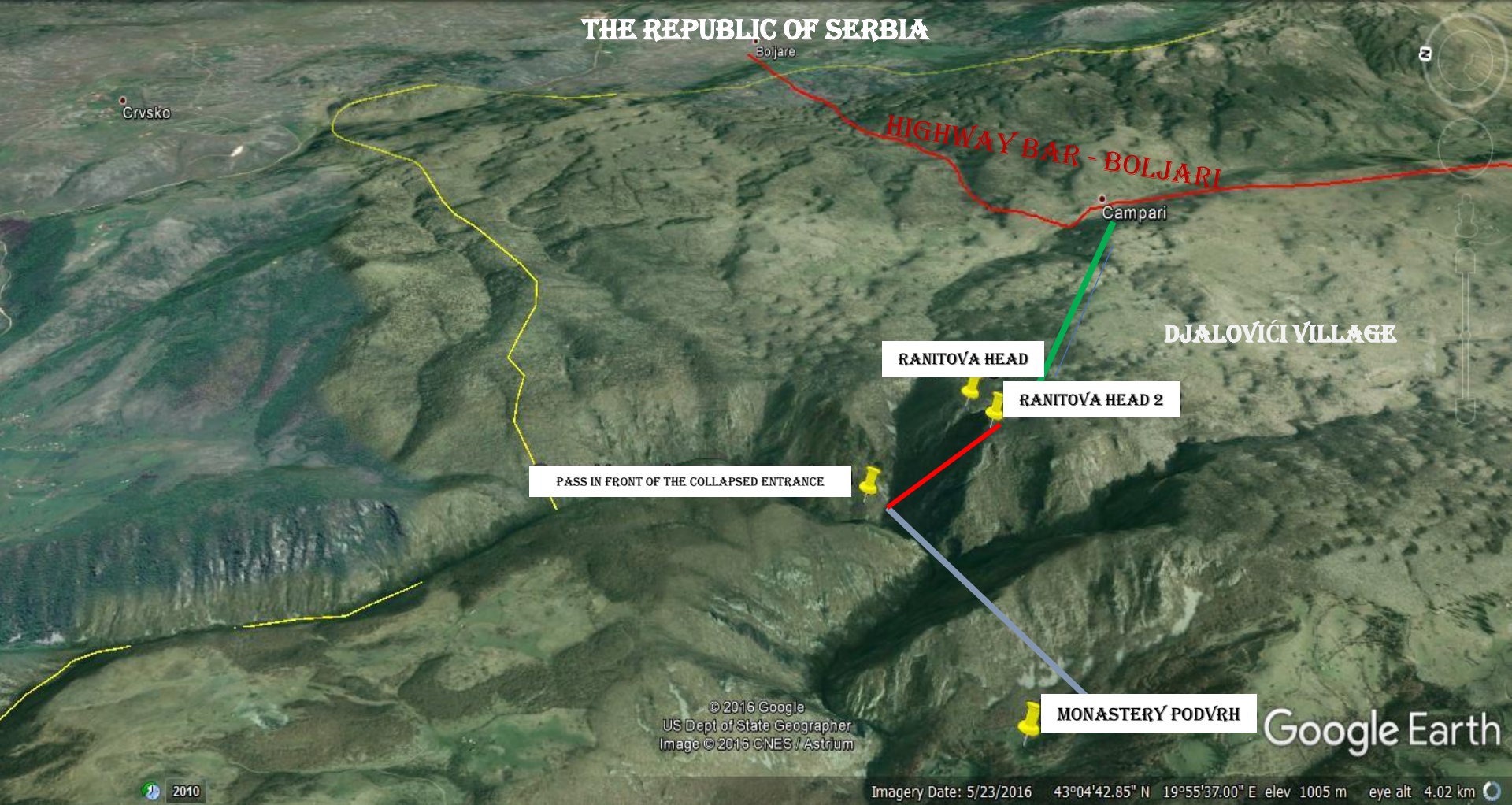
BISTRICA - MONASTERY PODVRH

CABLE CAR ROUTE FROM MONASTERY PODVRH TO THE ENTERANCE OF THE CAVE



DEPARTURE STATION OF THE CABLE CAR

EXIT STATION OF THE CABLE CAR



**POSSIBILITY OF CONNECTING ĐALOVIC CAVE WITH THE
BAR-BOLJARE HIGHWAY, CABLE L = 300M FROM THE
LOCATION OF RANIT'S HEAD-ĐALOVIC VILLAGE**

MONASTERY PODVŔRH, BIJELO POLJE-BISTRICA-PODVŔRH : FROM 1606. YEAR



DIVOŠ'S GOSPEL OF THE FRESCO WAS PAINTED BY THE PRIEST STRAHINJA FROM BUDIMLJE

Манастир светог Николe у Подврху



Овај манастир је изграђен на месту старог црквеног комплекса из 16. и 17. века. Манастир је изграђен од дрвета и камена, а изнад њега се налази велика звоника. Манастир је један од најлепших манастира у Подврху. Манастир је изграђен од дрвета и камена, а изнад њега се налази велика звоника. Манастир је један од најлепших манастира у Подврху.



Манастир је изграђен од дрвета и камена, а изнад њега се налази велика звоника. Манастир је један од најлепших манастира у Подврху.



Манастир је изграђен од дрвета и камена, а изнад њега се налази велика звоника. Манастир је један од најлепших манастира у Подврху.



Манастир је изграђен од дрвета и камена, а изнад њега се налази велика звоника. Манастир је један од најлепших манастира у Подврху.

Манастир је изграђен од дрвета и камена, а изнад њега се налази велика звоника. Манастир је један од најлепших манастира у Подврху.



Манастир је изграђен од дрвета и камена, а изнад њега се налази велика звоника. Манастир је један од најлепших манастира у Подврху.

The Monastery of St Nicholas in Podvrh



The monastery was built in the 16th century. It is one of the most beautiful monasteries in the region. The monastery is built of wood and stone, and it has a large bell tower. The monastery is one of the most beautiful monasteries in the region.



The monastery is one of the most beautiful monasteries in the region. It is built of wood and stone, and it has a large bell tower.



BISTRICA HAS SIGNIFICANT TOURIST POTENTIALS



STONE BRIDGE ON BISTRICA, FROM THE OTTOMAN ERA: XVII V



THE FIRST HYDROELECTRIC POWER PLANT IN BIJELO POLJE: 1938



GREAT POTENTIALS OF RURAL TOURISM IN THE BISTRICA AREA



HUNTING AND FISHING. BISTRICA FLY FISHING AREA



FLY FISHING ZONE

RIVER BISTRICA, BIJELO POLJE

CATCH & RELEASE



Ribolovni režim:

- Od mosta u Loznoj Luci do ušća Bistrice u rijeku Lim dozvoljen je ribolov isključivo priborom za mušičarenje, jednom mušicom
- Dozvoljen je isključivo ribolov uhvati i pusti
- Obavezna upotreba meredova
- Obavezna je upotreba mušica bez povratne kuke
- Zabranjen je ribolov na živ mamac i varalicu



Contact:

Mob: +382 (0) 67 561 243, +382 (0) 69 371 999

E-mail: srksinjavac@gmail.com

Web site: flyfishingmne.me

with funding from
Austrian
Development Cooperation



Fishing regulations:

- Only Catch & Release allowed from the Bridge in Lozna Luka to the confluence of the River Bistrica into the River Lim using fly fishing tackle, with one fly
- Only Catch & Release allowed
- Use of landing nets required
- No barbed hooks
- Fishing with live bait and trickster not allowed

**LAST ORIGINAL DINAR HOUSE
IN THE REGION. BISTRICA, MOJSTIR**

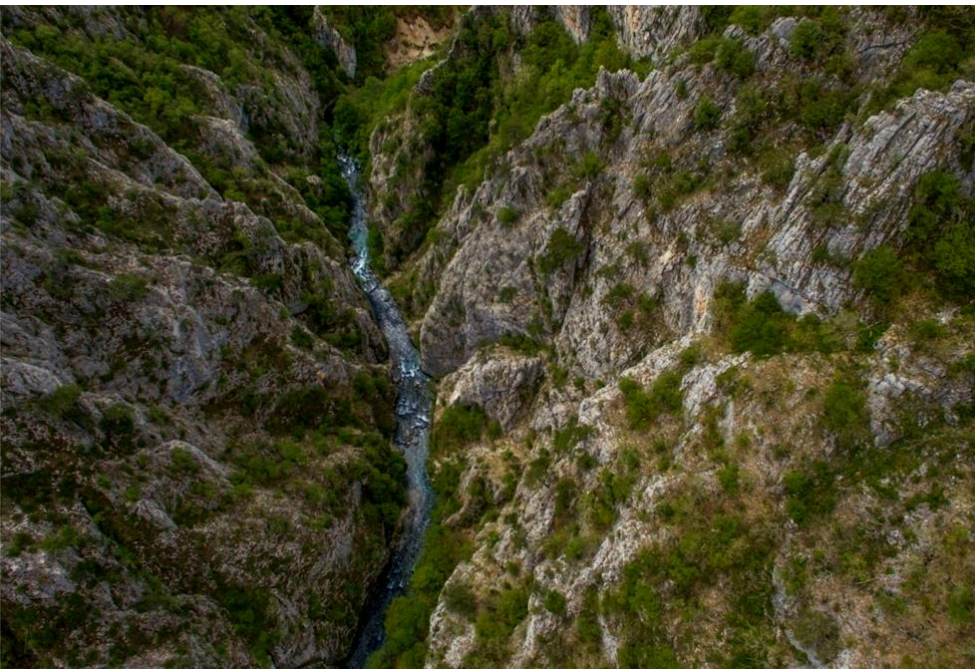




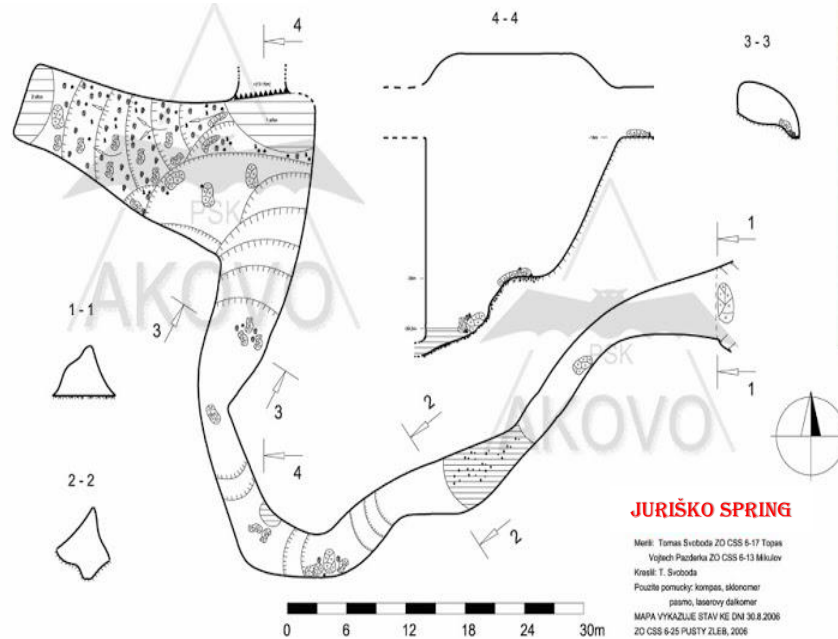
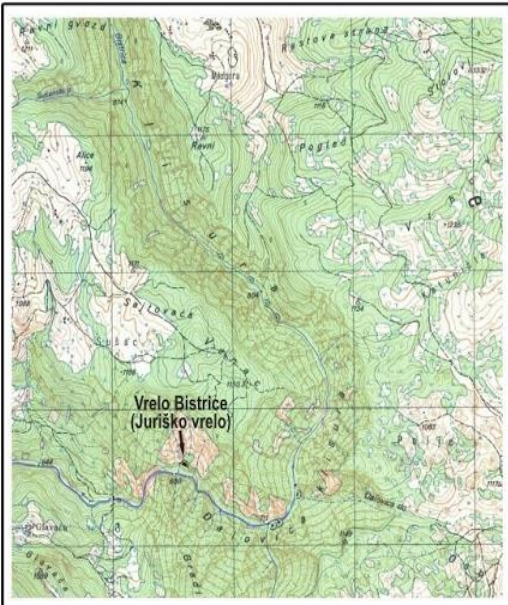
DALOVIĆA CANYON



DEVIL'S FIERS



JURIŠKO SPRING (SPRING OF RIVER BISTRICA)



JURIŠKO SPRING

Měřil: Tomáš Svoboda ZD ČSS 6-17 Topas
 Vojtěch Pazderna ZD ČSS 6-13 Mikulov
 Kreslil: T. Svoboda
 Použité pomůcky: kompas, sklonometr,
 pásmo, laserový dálkoměr
 MAPA VYKAZUJE STAV KE DNÍ 30.8.2008
 ZD ČSS 6-25 PUSTÝ ZLEB, 2006



BISTRICA RIVER CANYON WITH MULTIPLE INTERESTING POTENTIALS. TRACK CONSTRUCTION



BISTRICA HEAD-ONE OF THE TWO MAIN SOURCES



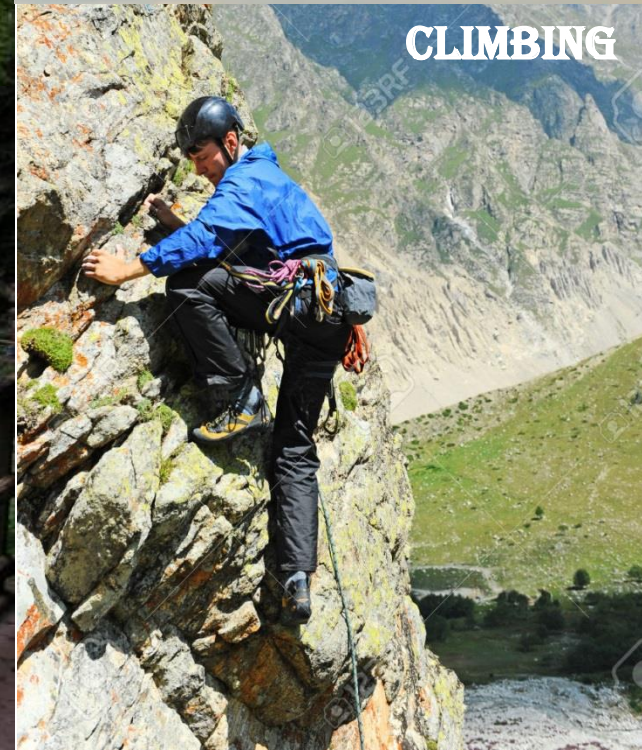
AN EXAMPLE OF ARRANGING TRAILS



PARAGLIDING



CLIMBING





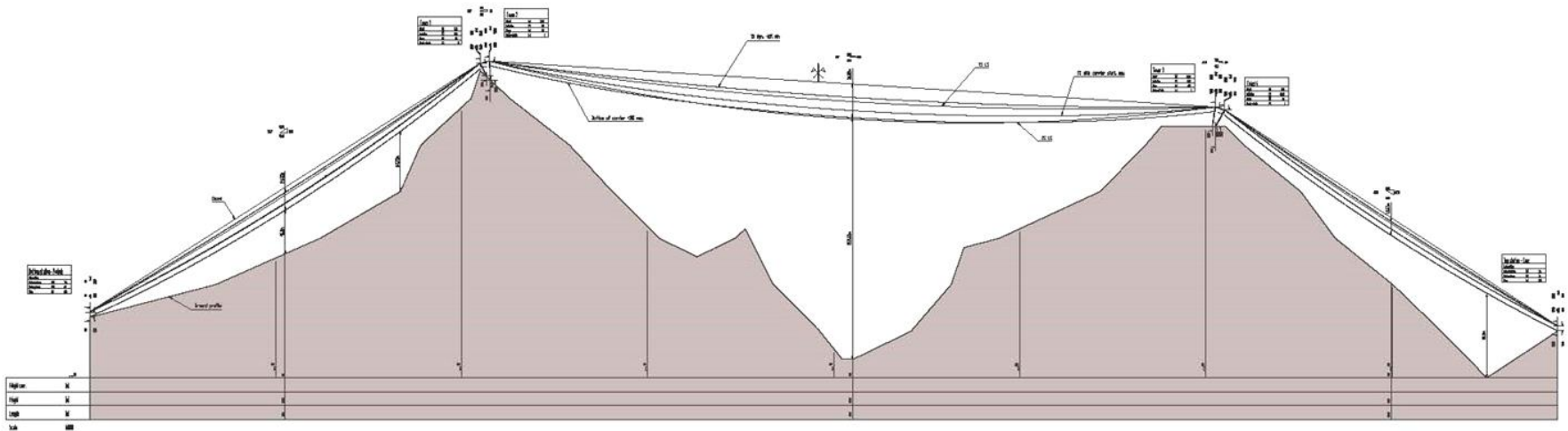
**POSSIBILITY OF USING THE
"ZIP LINE" SYSTEM FOR THE
PURPOSE OF TRANSPORT
TO THE CAVE AND THE
FORMATION OF THE
ADRENALINE PARK**



CABLE CAR FROM PODVÝRH MONASTERY - ENTRANCE FOR TOURISTS TO PEČINA, CAPACITY 74 PASSENGERS / H (8 PASSENGERS IN THE CABIN). T = 6 MIN.

Principal technical data:

Technical information		
Length, horizontal		1578,00 m
Vertical rise		-15,00 m
Inclined length (between EB)		1727,00 m
Transport capacity		74 pers./h
Cable speed		0 – 6,0 m/s
Travelling time		5,77 min
Number of vehicles		2 pcs.
Cable diameter	track cables	36 mm
	hauling cable	20 mm
Number of tower supports		4 pcs.
Motor power		180 kW
Transport mode	Uphill and downhill transport	
Line gauge		6,4 m

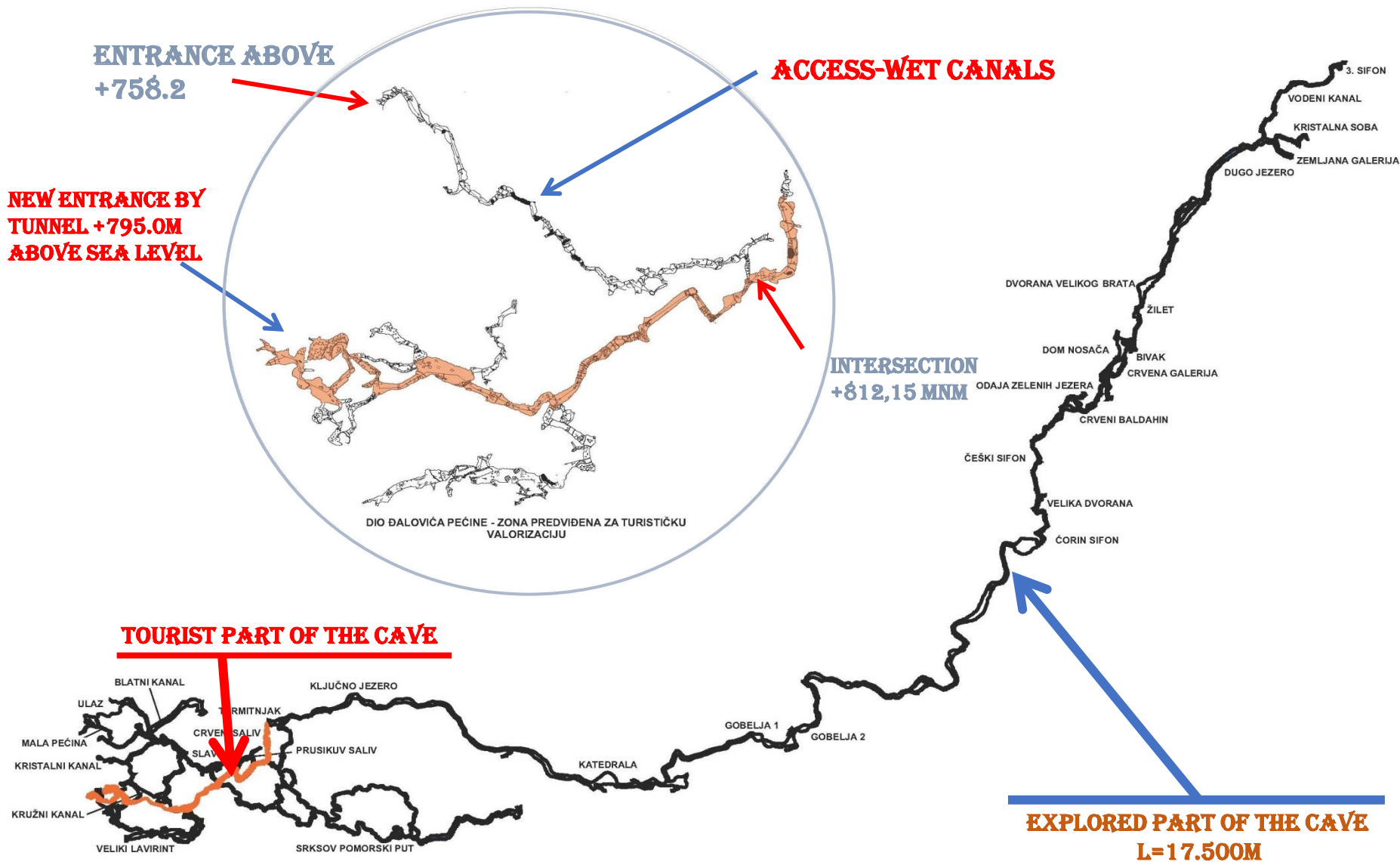


L1=1.578, L2=1.727M. FOUR PILLARS, THREE SPANS

KNOWN AND EXPLORED PART OF ĐALOVIĆ CAVE - 17,500 M

EXTENSIVE RESEARCH HAS BEEN CONDUCTED IN ORDER TO DETERMINE WHICH PART OF THE CAVE WILL BE VALORIZED FOR TOURIST PURPOSES.

WHERE AND HOW TO FORM A TOURIST ENTRY?



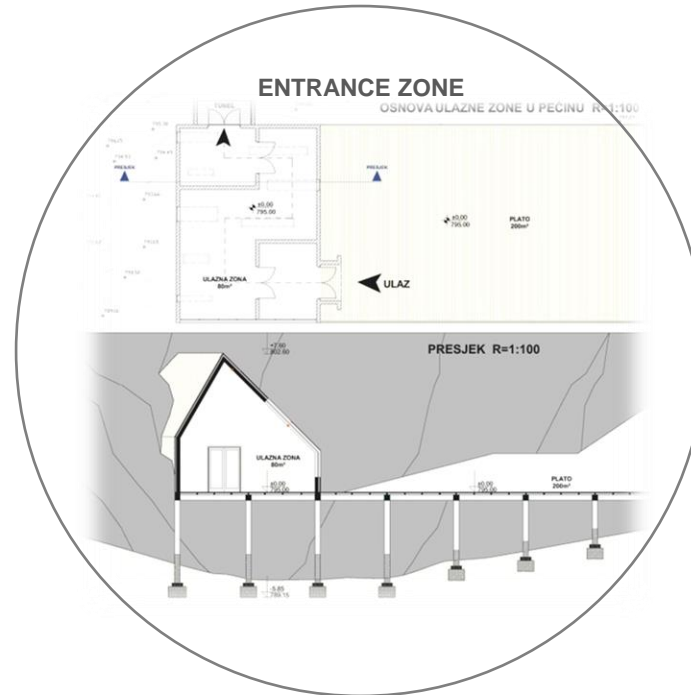


OUR FIRST TASK WAS TO DETERMINE A PART OF THE CAVE FOR TOURIST VISITS



PART OF ĐALOVIĆ CAVE INTENDED FOR TOURIST VALORIZATION

L = 814.30 M X 2 + 9 HALLS WITH PLATEAUS FOR VISITORS



ENTRY PARTY

CANDLESTICK HALL

GEYSERS

GREAT HALL

STALAGMITE HALL

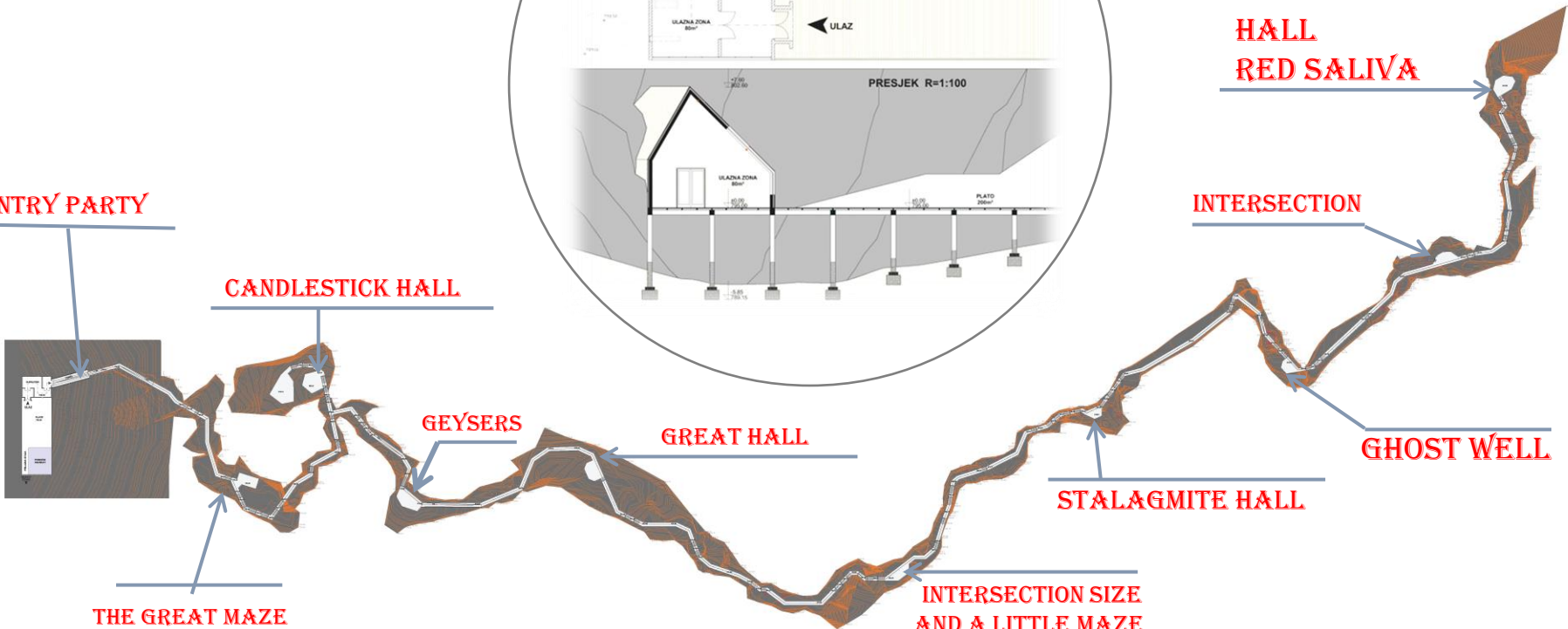
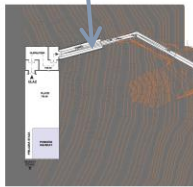
INTERSECTION
AND A LITTLE MAZE

HALL
RED SALIVA

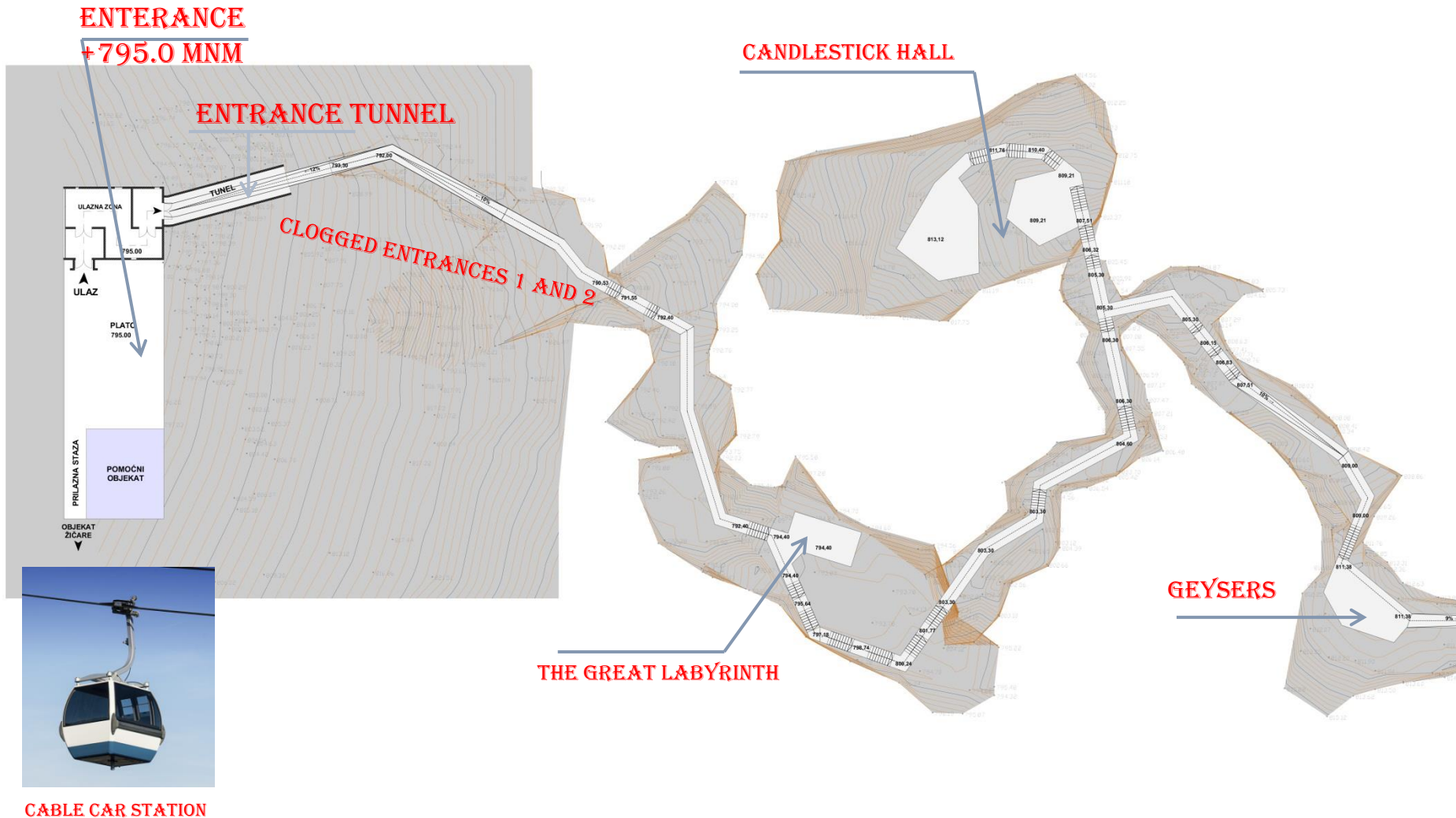
INTERSECTION

GHOST WELL

THE GREAT MAZE



DETAIL OF THE FIRST SEGMENT OF THE CAVE WITH THE ENTRANCE PARTY



CABLE CAR STATION

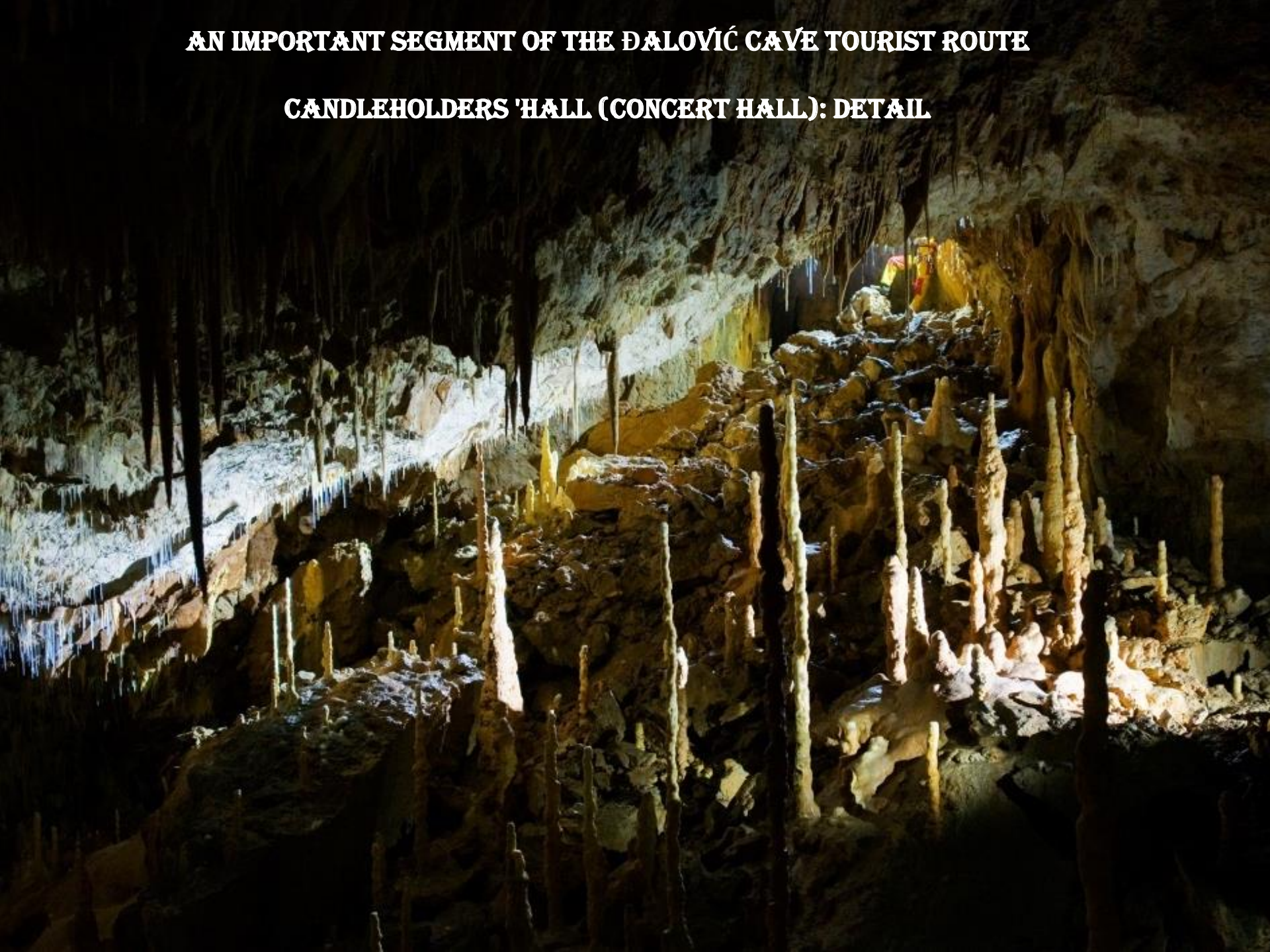
CONSTANT TEMPERATURE IN THE CAVE IS 11 DEGREES, HUMIDITY 100%

ACCESS PLATEAU AND ENTRANCE FACILITY IN THE CAVE



AN IMPORTANT SEGMENT OF THE ĐALOVIĆ CAVE TOURIST ROUTE

CANDLEHOLDERS 'HALL (CONCERT HALL): DETAIL



PASSAGE IN WHITE







STALAGMITE HALL



SPIRIT WELL



STALAGMIT



TALL STALAGMIT 10M



BLIND CHAMBER WITH DRAPERS



LAKE HOPA-CUPA



SNOW CASTLE



SNOW CASTLE



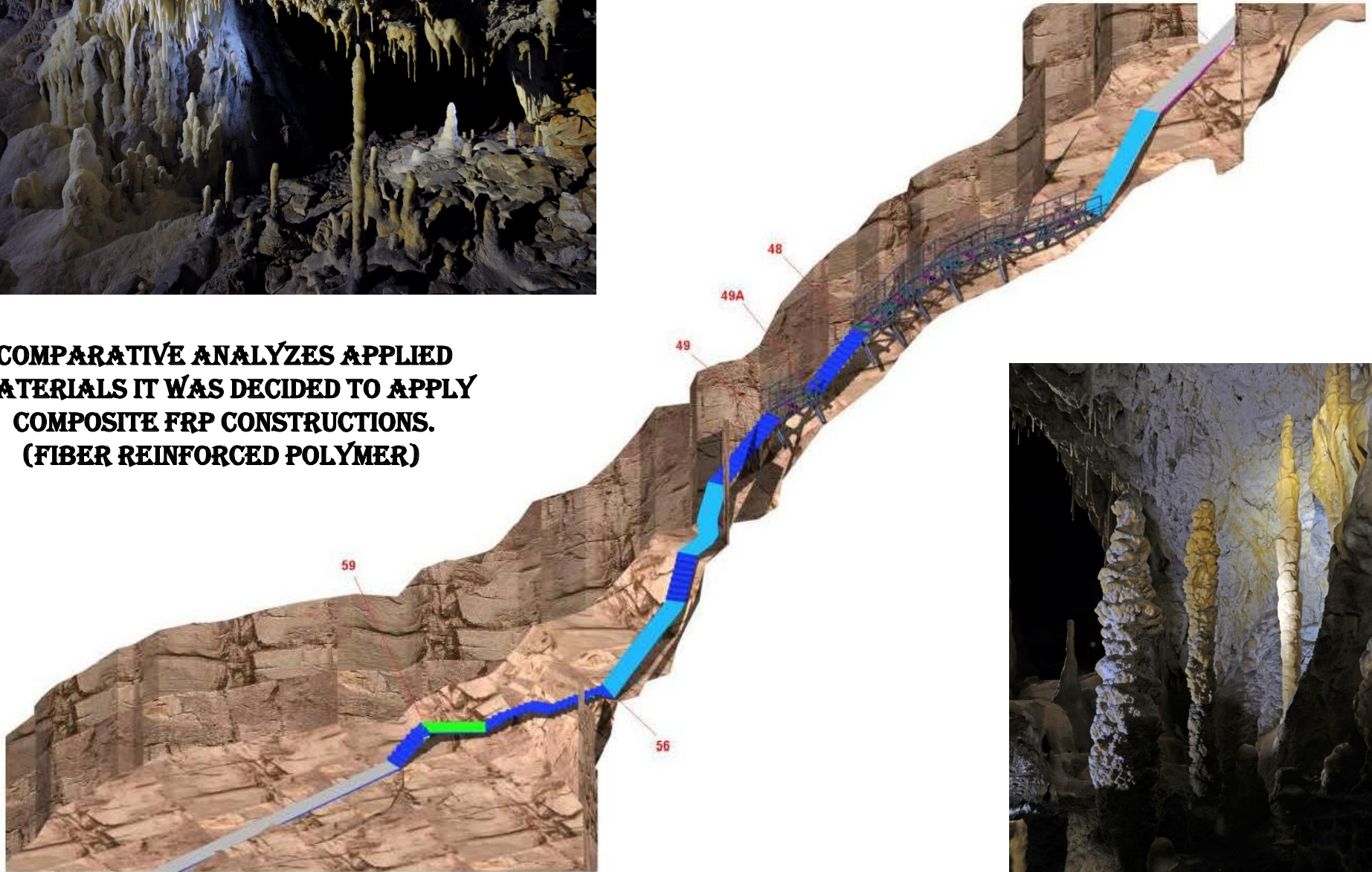
RED SALIYA HALL



CAVE TRACK STRUCTURE MODEL

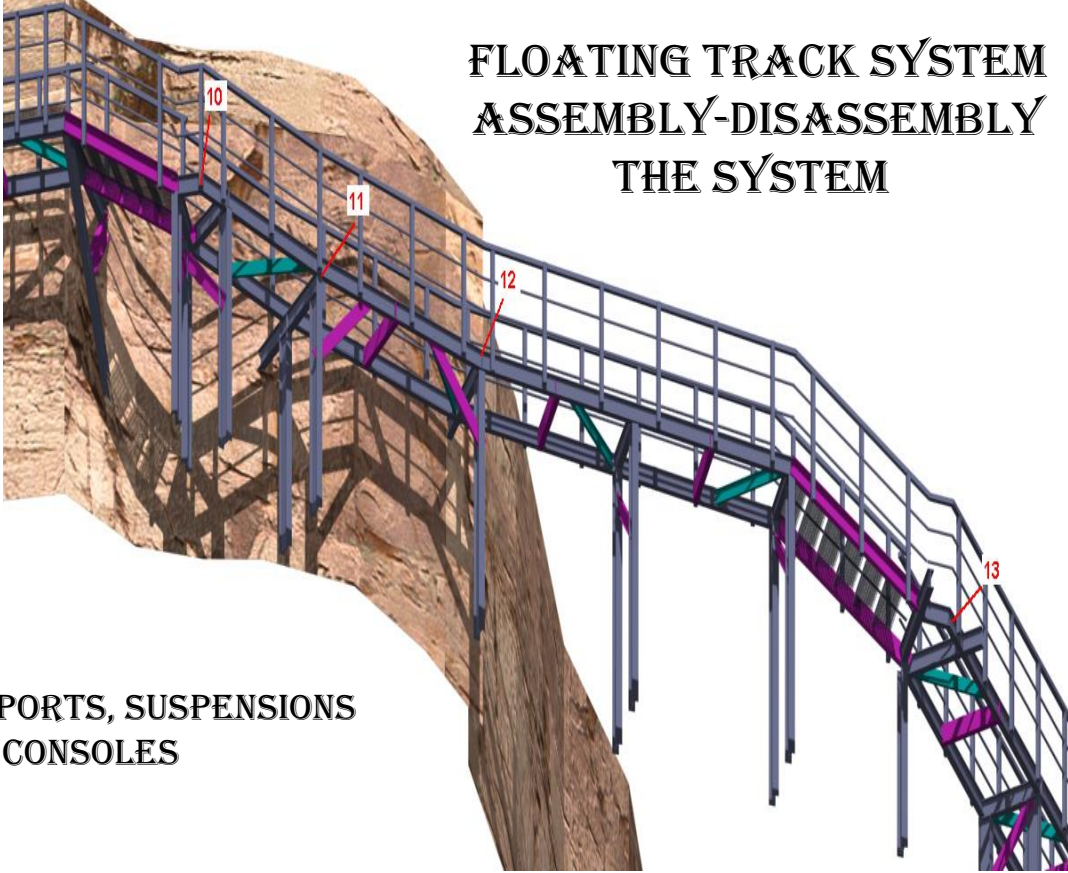


COMPARATIVE ANALYZES APPLIED MATERIALS IT WAS DECIDED TO APPLY COMPOSITE FRP CONSTRUCTIONS. (FIBER REINFORCED POLYMER)

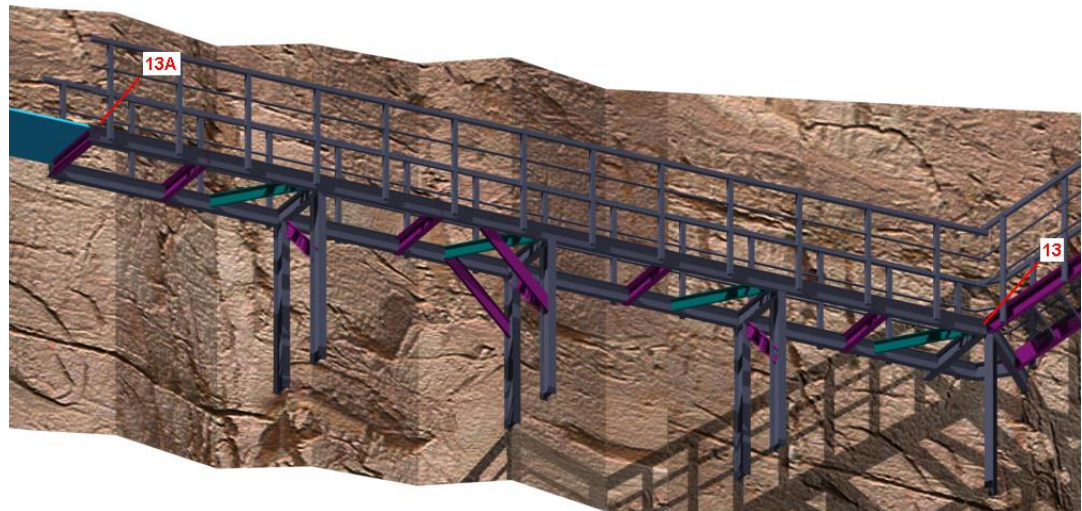




FLOATING TRACK SYSTEM ASSEMBLY-DISASSEMBLY THE SYSTEM

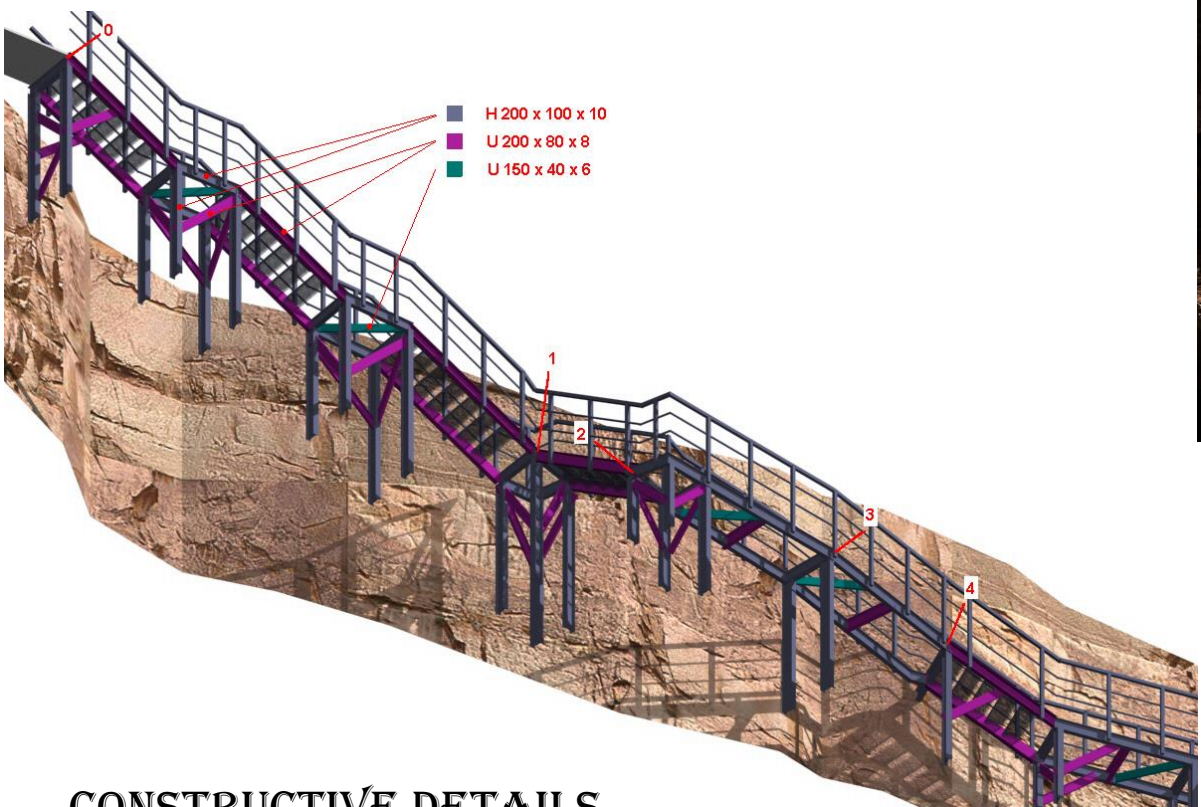


SYSTEMS: SUPPORTS, SUSPENSIONS
AND CONSOLES

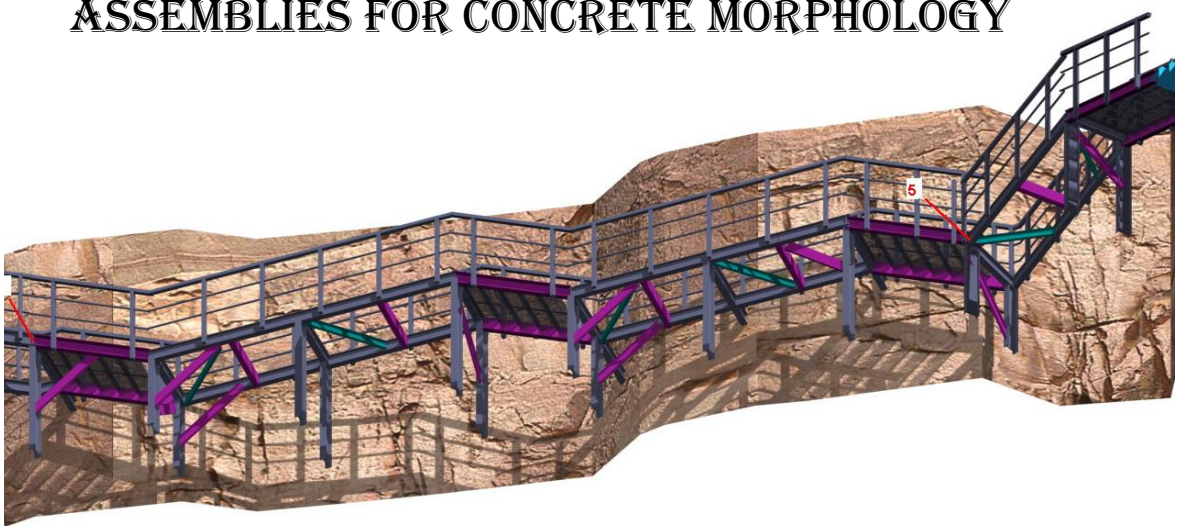


BRIDGING SYSTEM FRP CONSTRUCTIONS





**CONSTRUCTIVE DETAILS
ASSEMBLIES FOR CONCRETE MORPHOLOGY**



**THE GOAL IS TO SAVE
EVERYTHING
100% DECORATIONS
ON THE WALL, FLOOR
AND CEILING OF THE
CAVE**



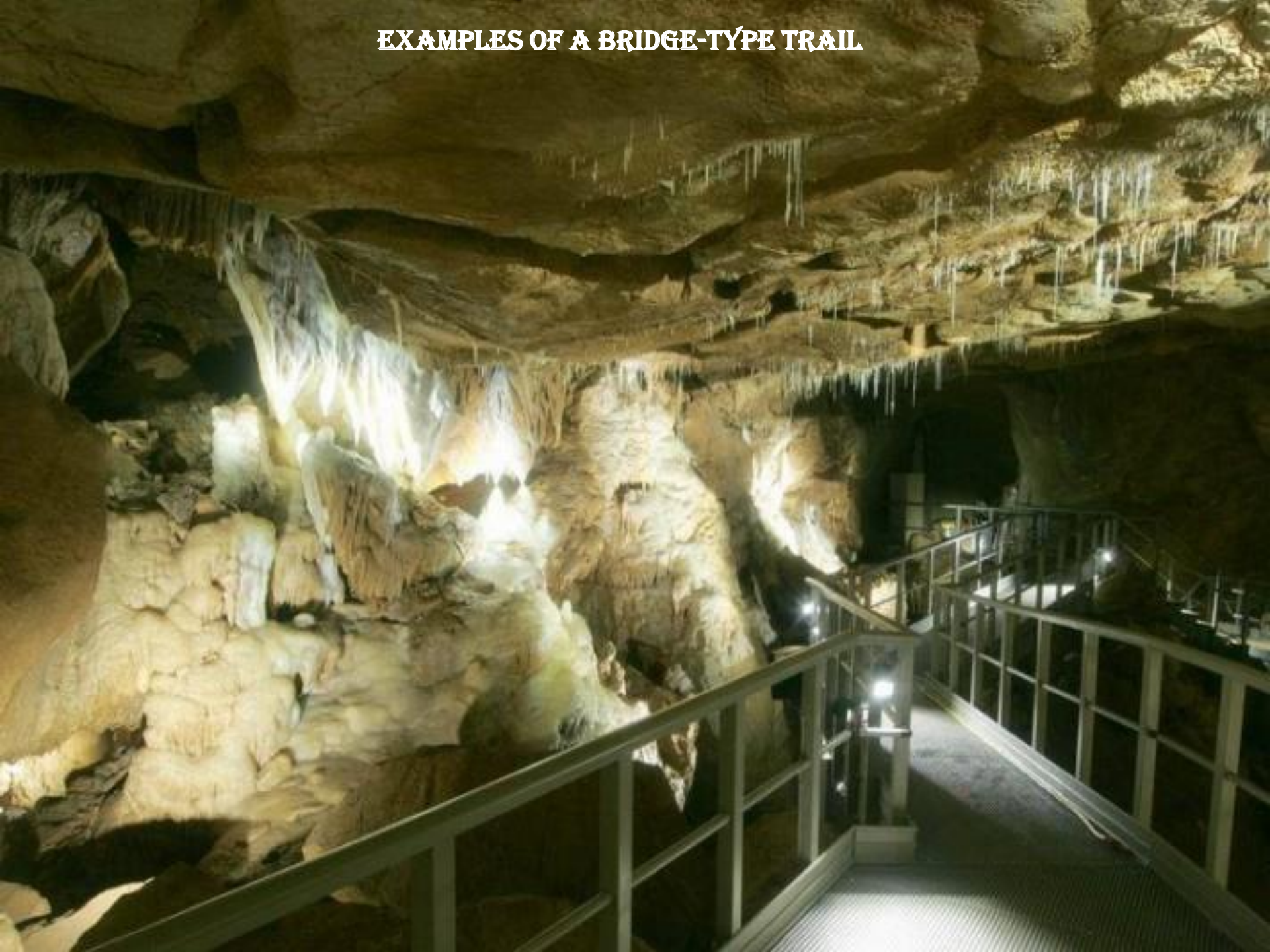
USE OF THE BEST TOPOLOGY AND VIEWS SUPPORTED BY THE LIGHTING SYSTEM



**RESPECT FOR FIELD MORPHOLOGY
WITHOUT CORRECTIONS**



EXAMPLES OF A BRIDGE-TYPE TRAIL



EXAMPLE OF PLATEAU FORMATION AT ESSENTIAL POINTS

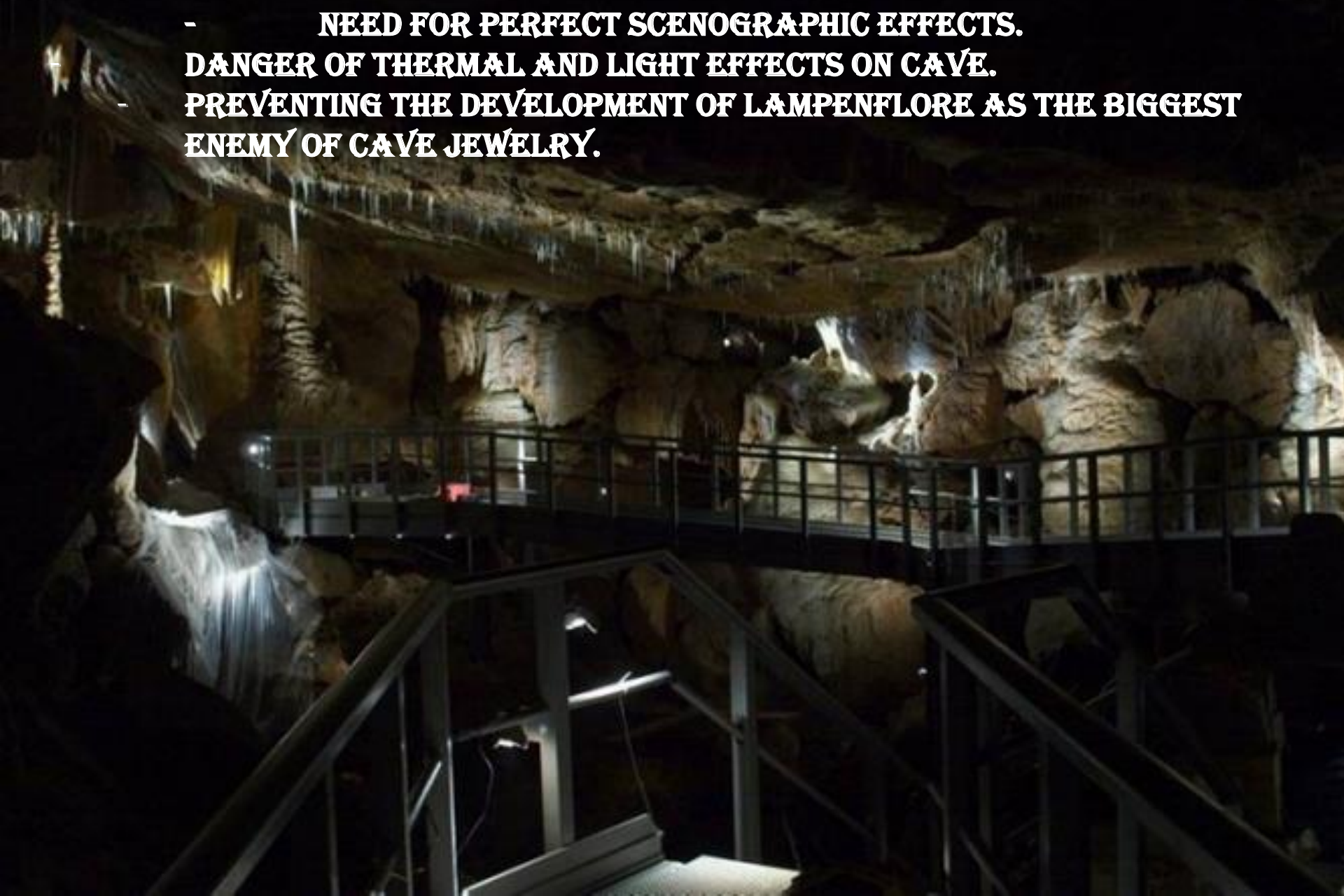


POSITIONING OF TRACKS IN THE MOST SUITABLE PLACES IN RELATION TO THE ASSORTMENTS OF CAVE ORNAMENTS AND SPATIAL STRUCTURE



THE CHOICE OF ADEQUATE LIGHTING IN THE CAVES IS ONE OF THE MOST DIFFICULT TASKS:

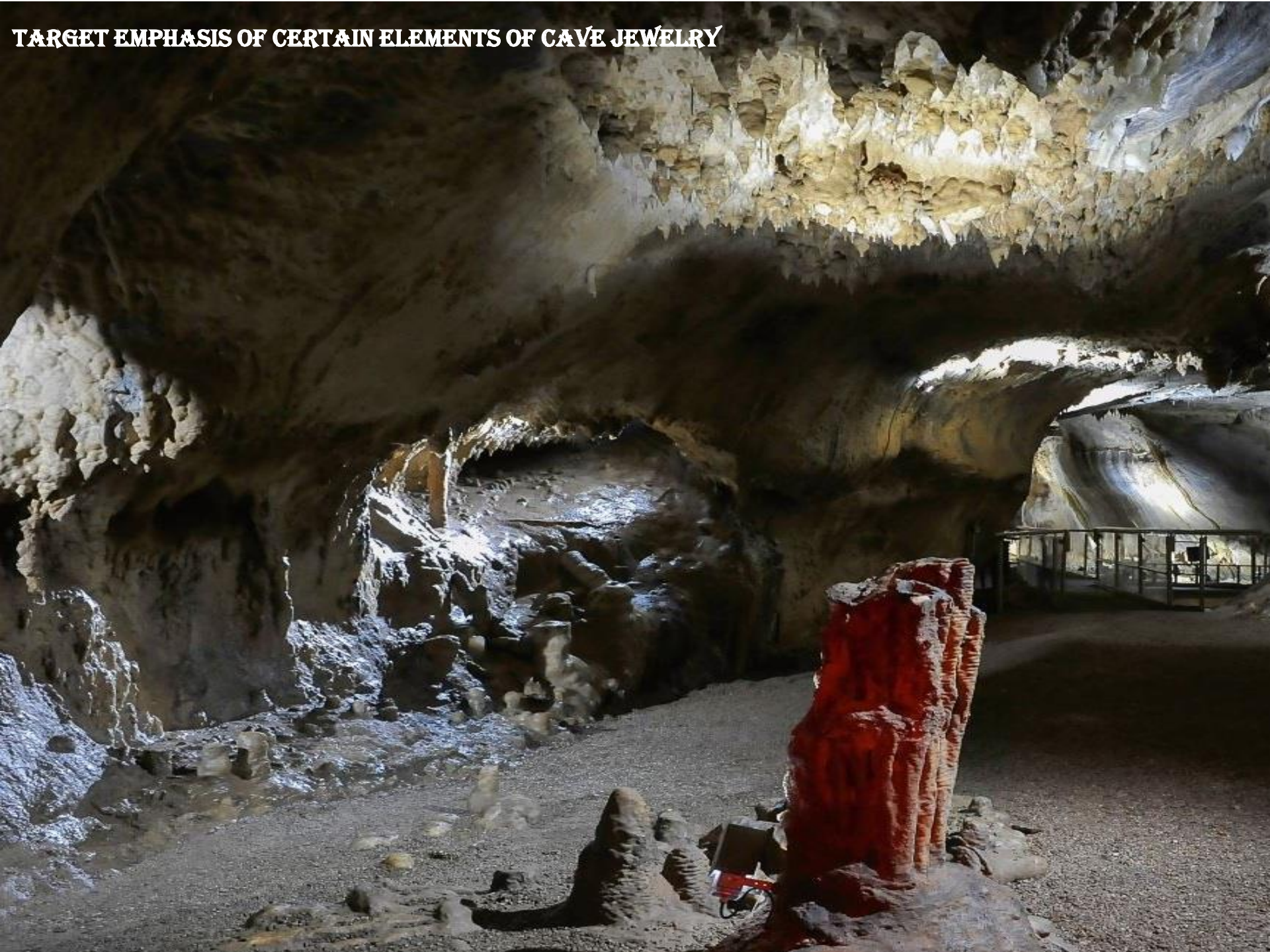
- **NEED FOR PERFECT SCENOGRAPHIC EFFECTS.**
- **DANGER OF THERMAL AND LIGHT EFFECTS ON CAVE.**
- **PREVENTING THE DEVELOPMENT OF LAMPENFLORE AS THE BIGGEST ENEMY OF CAVE JEWELRY.**



POSSIBLE DOSED AND VARIABLE SCENOGRAPHIC EFFECTS, OF EACH SEGMENT OF THE CAVE, WITH THE HELP OF LIGHTING AND SOUND



TARGET EMPHASIS OF CERTAIN ELEMENTS OF CAVE JEWELRY



CONCLUSION

TOTAL PROJECT VALUE IS 23.000.000 €.

THE PROJECT IS BASED ON A REALISTIC ASSUMPTION OF APPROXIMATELY 160,000 VISITORS A YEAR.

ECONOMIC ANALYSIS SHOWS THAT THE PROJECT CAN WORK WITH 56,000 VISITORS, WHICH BY ALL PARAMETERS SHOULD NOT BE QUESTIONABLE. IN THIS CASE, THE YIELD RATE OF IRR = 6.35%, WHICH IS SIGNIFICANTLY HIGHER THAN THE SOCIAL DISCOUNT RATE OF 4%.

THE DRIVING FACTOR OF OTHER ACTIVITIES, WHICH STIMULATES THIS PROJECT, IS ONE OF ITS GREATEST VALUES.

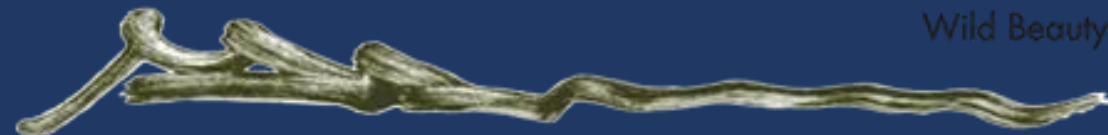
GIVEN THE POTENTIAL OF THE ĐALOVIĆ CAVE, WHICH CAN BE COMPARED TO THE BEST FACILITIES OF ITS KIND IN EUROPE AND THE WORLD, IT CAN BECOME A BRAND BY WHICH IT WILL BE RECOGNIZED, NOT ONLY BIJELO POLJE, BUT ALSO MONTENEGRO. LIKE SVETI STEFAN, POSTOJNA IN SLOVENIA, DUBROVNIK AND PLITVICE IN CROATIA OR THE RED BRIDGE IN MOSTAR FOR BIH.



DJALOVICA CAVE

MONTENEGRO

Wild Beauty



INVEST
IN BIJELO POLJE

project author prof.dr. of arch. Rifat Alihodžić